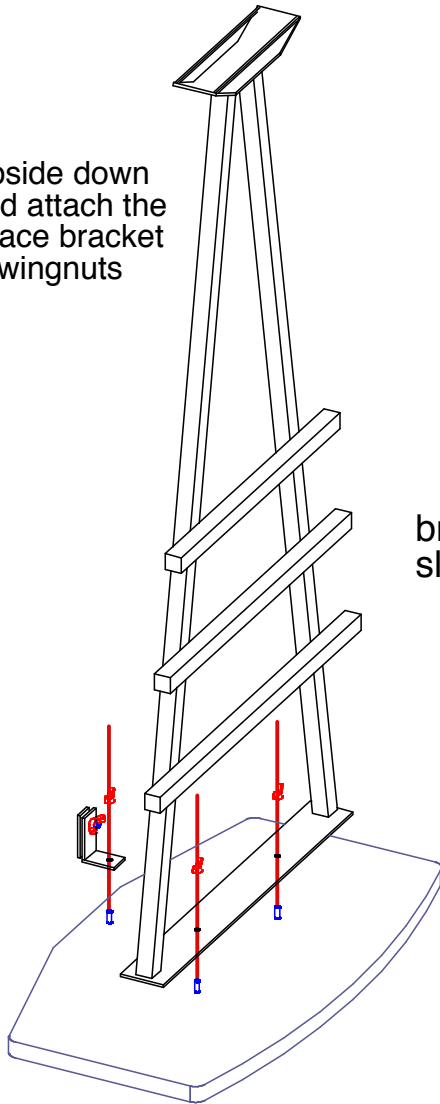
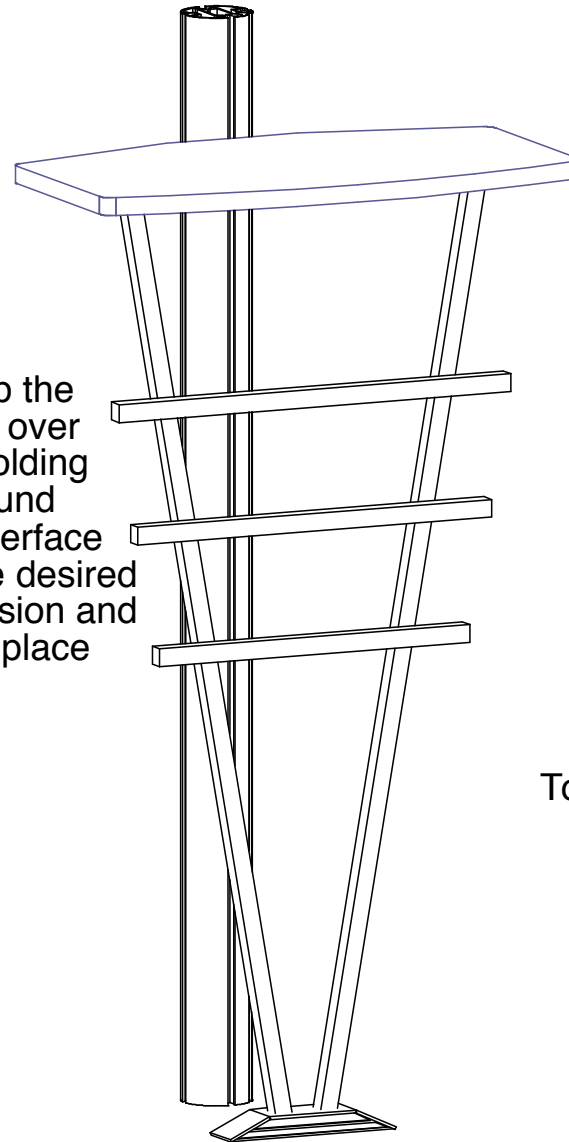


Hyperlite Accessory Table Installation

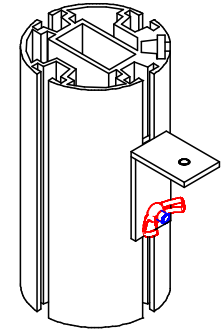
Place counter top upside down on a clean surface and attach the leg support and interface bracket as shown, tighten wingnuts



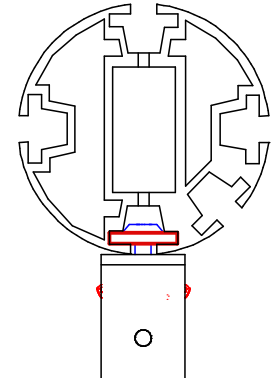
Carefully flip the counter unit over and whilst holding off the ground line up the interface bracket with the desired slot in the extrusion and lower in into place



Bracket detail showing bracket interface with extrusion



Top view showing bracket interface with extrusion



Please note: Accessory trim and counter top shape may differ depending on which model you purchased



DESIGN : Hyperlite Accessory Table Installation

DATE: 6/4/10

REFERENCE:

© Trussworks 2010

The designs shown herein are the proprietary property of Trussworks and protected by copyright and other laws. This document is to be maintained in confidence. No portion of the information or design shown herein may be reproduced, electronically or otherwise, nor may any display be made from this design without written consent from Trussworks.

DRAWN BY: C.J.Morita