

TOWER CASE

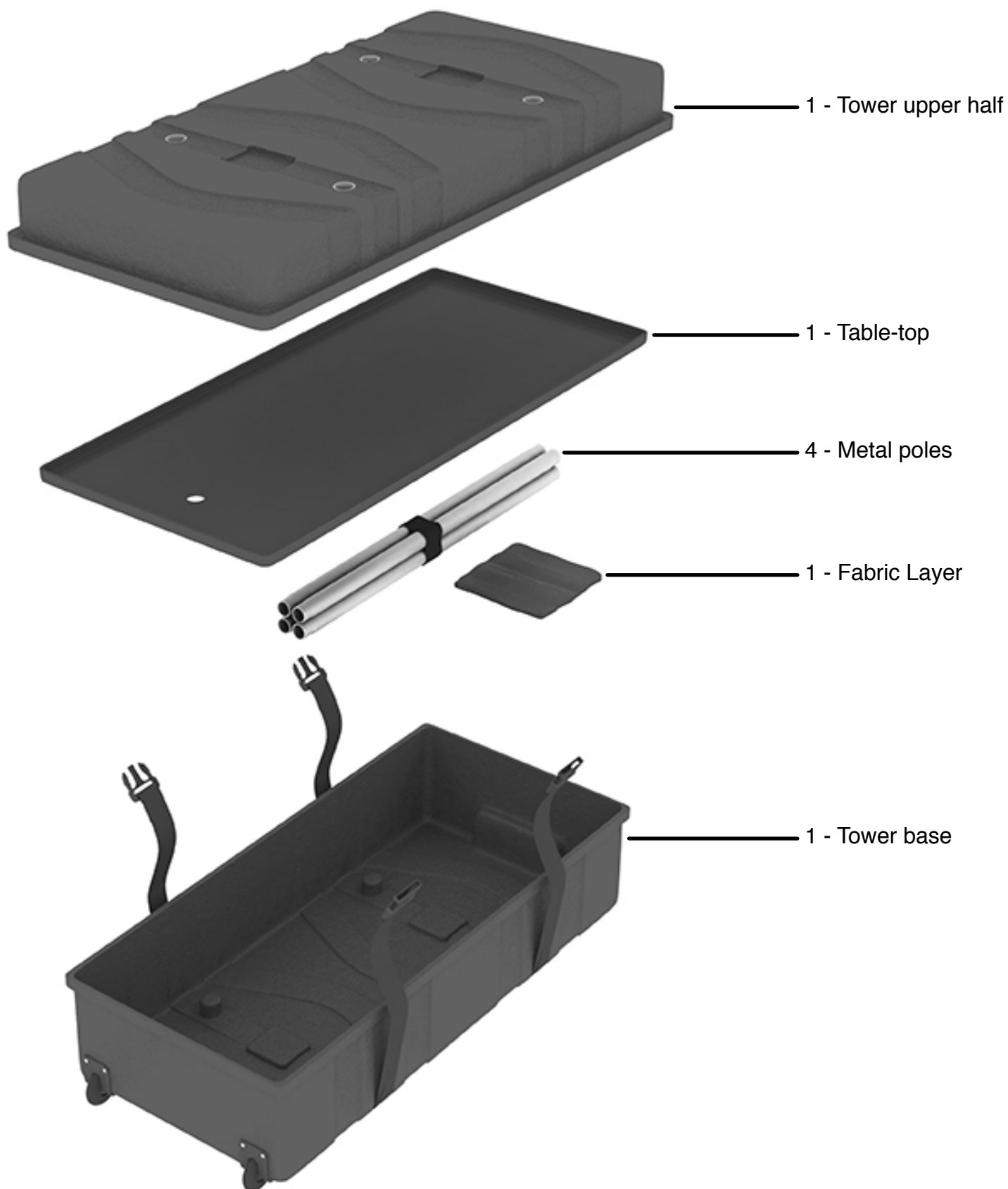


FRONT



BACK

PARTS LIST



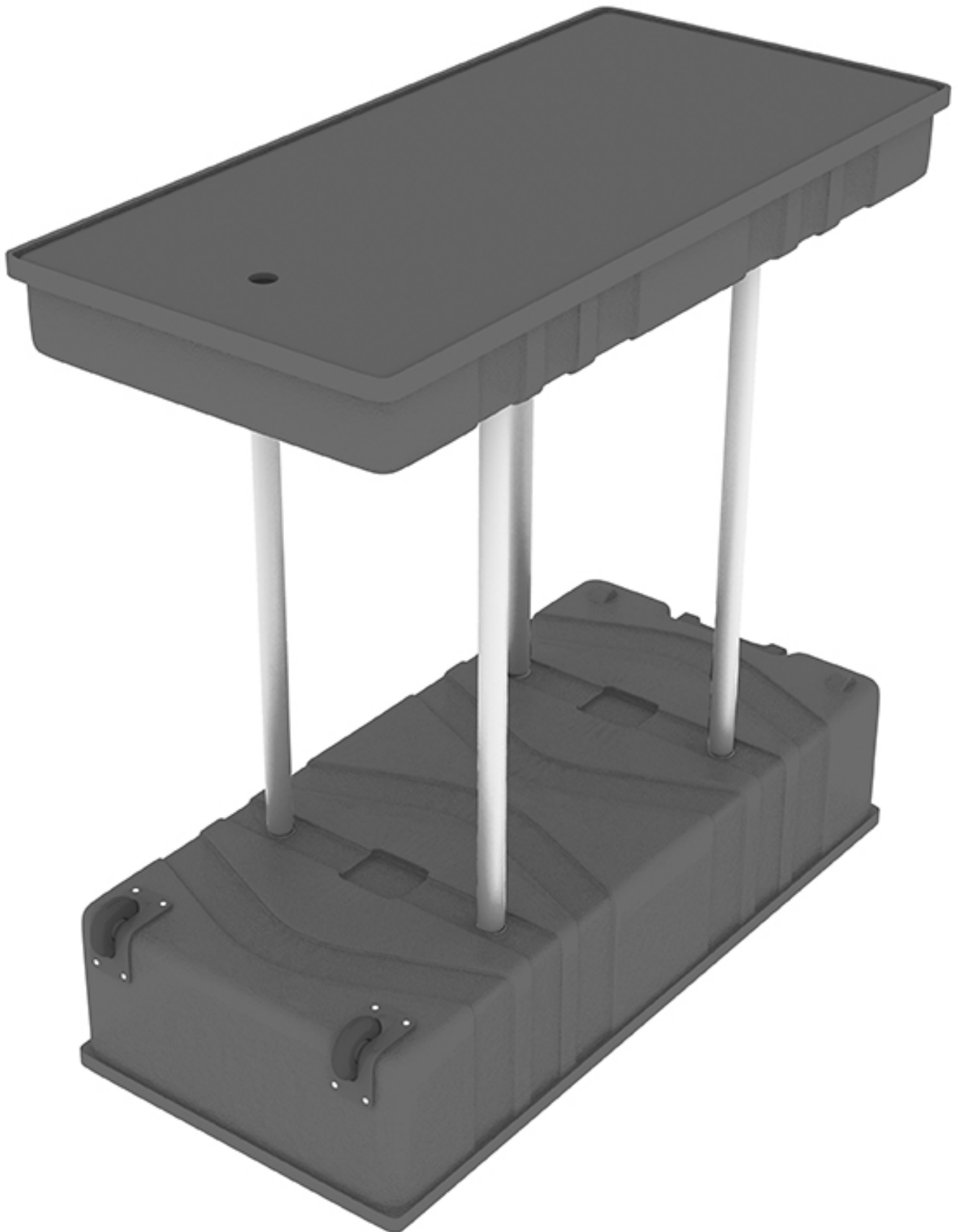
ASSEMBLY

- 1 Unpack contents. Lay the section of the case with wheels, “wheels up” on a flat surface. Insert the 4 metal poles into the 4 slots on the case. Place the other half of the case onto the 4 poles, and insert each one into the adjoining slots on this upper half, just like you did on the bottom half. Place the plastic layer onto the upper case, creating the flat surface for the tower case.

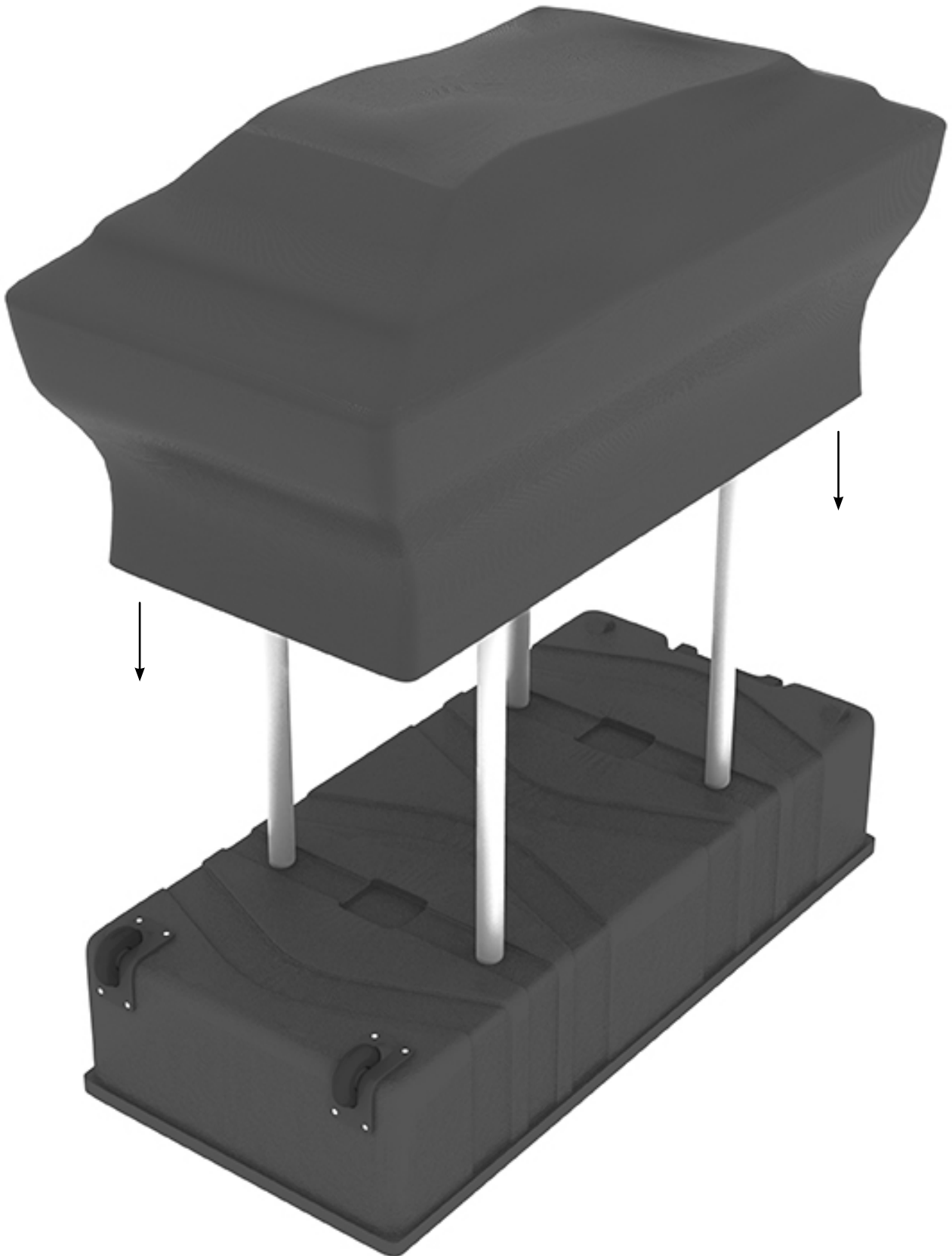


2

This is how your Tower Case should appear at this point.



- 3** Once the unit feels secure, unfold the fabric layer. Gently pull the fabric over the top of the case. Pull down fabric underneath the bottom of the tower case.



- 4** If adjustments are needed, gently pull fabric in required direction(s) until straight.

