

# EDGE Simple iPad Stand Instructions

**Product Parts**

- 1 - Tablet Case (x1)
- 2 - Base (x1)
- 3 - Pole (x1)
- 4 - Phillips Head Screws (x4)
- 5 - Button Head Screws (x2)
- 6 - 4mm Hex Wrench (x1)
- 7 - Tablet Case Key (x1)

\*Standard Phillips screwdriver is needed for assembly (not included)



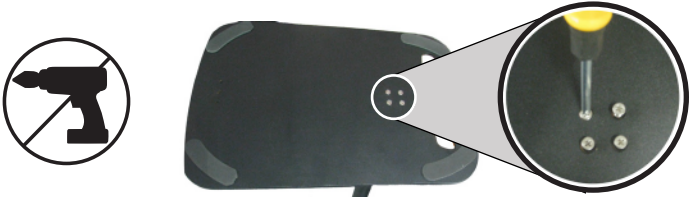
## Display Set-Up

### Step 1

Unpack all product parts from the box, and determine you have everything listed above.

### Step 2

Begin by turning the base upside down and attach the base (2) to the pole (3) using the four phillips head screws (4). Get all the screws started first, then tighten them using a standard phillips screwdriver. Do not over-tighten and DO NOT USE a powered drill.



### Step 3

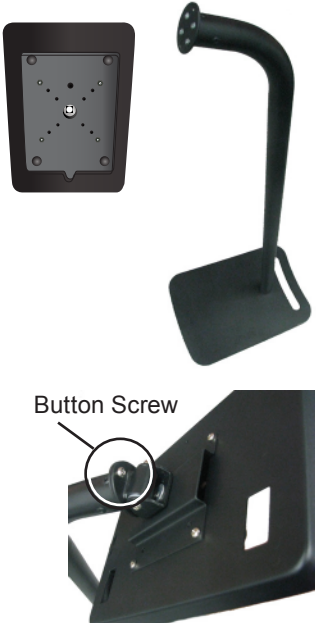
Turn the stand upright. Locate the Tablet case and the two button screws.

Tilt the unit down to expose the top screw hole on the back of the tablet holder. Insert a button screw in the top hole into the determined tapped hole on the stand.

Tilt the unit up to expose the bottom screw hole on the back of the tablet holder.

Tighten both button screws snug to the stand using the 4mm hex wrench provided.

Do not overtighten.



### Step 4

Remove the protective cover on the face of the tablet holder.



### Step 5

Unlock the tablet case by inserting the case key and turning either left or right.

To lock the case, simply push the pin of the lock in.

