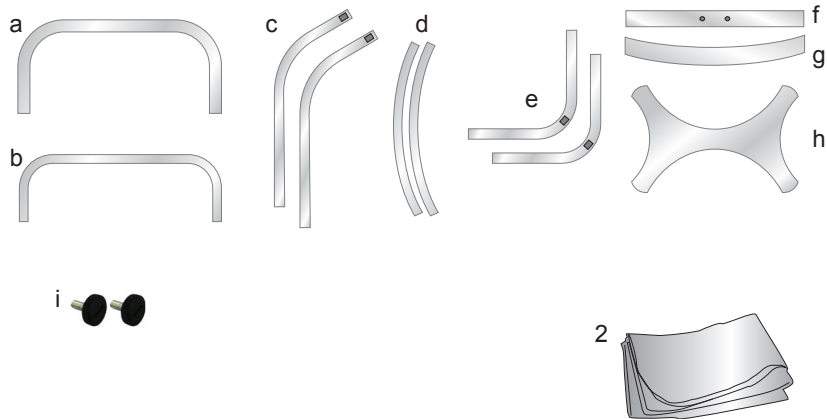


EDGE Eurofit Curve iPad Stand Instructions

Product Parts

1 - Hardware

- a - Top Curved Pole
- b - Bottom Curved Pole
- c - Angled Side Poles (x2)
- d - Curved Side Poles (x2)
- e - Bottom angle poles (x2)
- f - Top Horizontal Pole
- g - Bottom Horizontal Pole
- h - Tablet Bracket
- i - Tablet Knobs (x2)

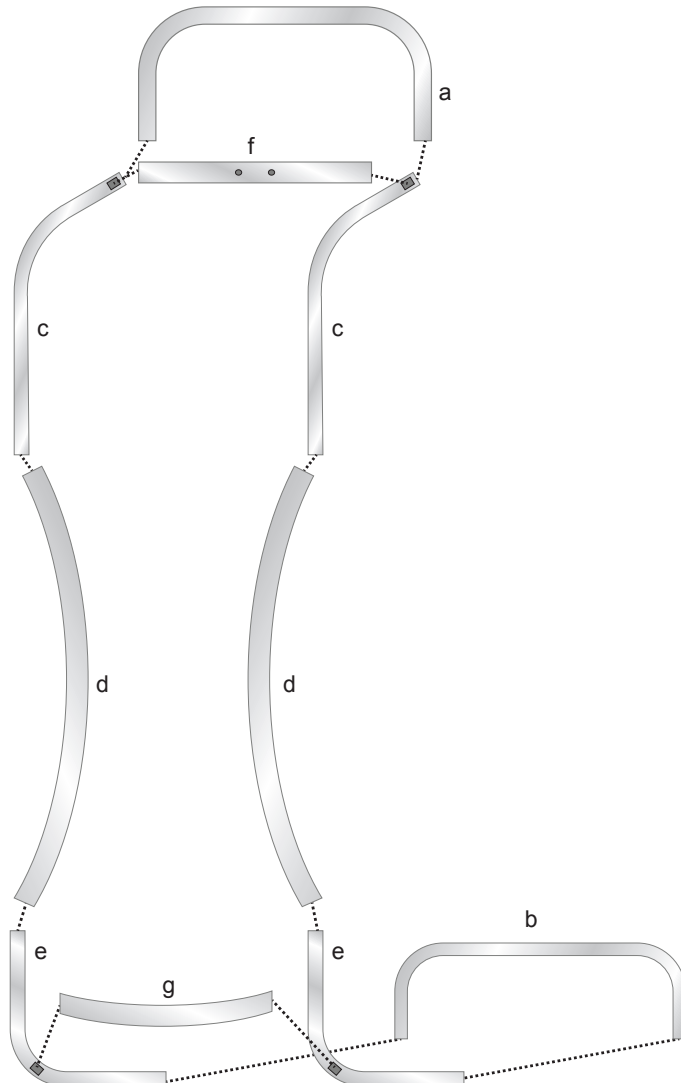
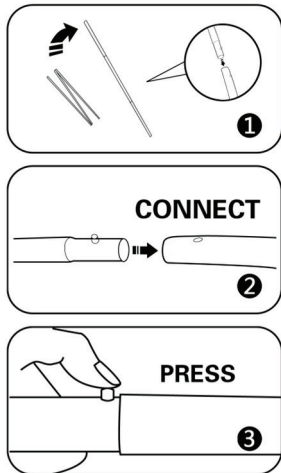


2 - Graphic

Hardware Assembly

Step 1

Open all parts to the hardware and assemble the parts using the diagram illustrated to the right.



Graphic Setup

Step 1

Set the assembled hardware on a clean surface. Locate the bottom of the graphic (zippered end) and slide it over the top of the hardware and continue to slide down the over hardware.

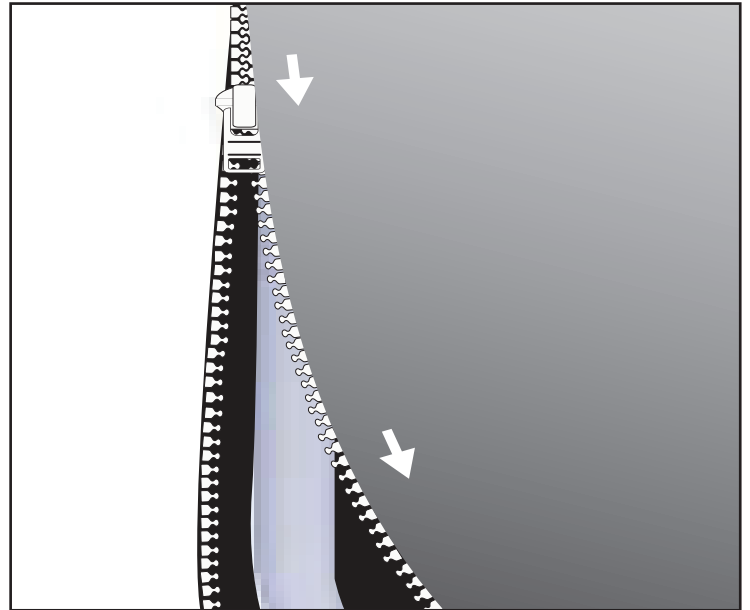


NOTE:

The graphic is designed to fit the hardware precisely, as a result the graphic may appear to be too tight during the installation process (this is normal).

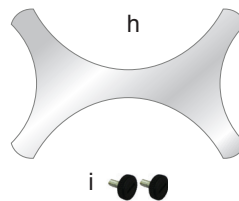
Step 2

Zip the Graphic Closed along the side and around the bottom.



Step 3

Attach the Tablet Bracket (h) as shown using the Screws (i) provided.



Storage

Store in a cool dry location.

Care

Machine wash cold, gentle cycle. Air Dry Only

Warranty Information: All products are designed to provide the user with a cost-effective and durable product. Standard warranty is a 'one year parts and labor' warranty which warrants product against defects in material and workmanship. It does not cover damage due to accidents, abuse, or normal wear and tear. Products found to be defective will be replaced or repaired at factory's discretion.