

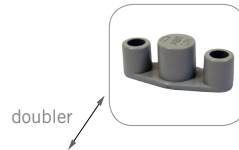
# rollup double sided 01

## RU-D1-S-3

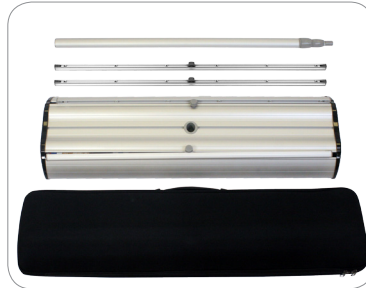
The rollup double sided 01 is a premium double-sided retractable banner stand that comes with a telescopic pole, graphic tensioner and offers all the latest features for trade show banner displays.



snap on & off end caps



doubler



integrated pole storage



New Banner Stand Accessories:  
easy connection with cam lock and  
channel



## features and benefits:

- Variable height = 29.5" - 83.35"
- Telescopic pole
- Integrated pole storage for the twist & lock telescopic pole
- Accessory channel featured on the top of the unit (to add a literature pocket or arm table accessory)
- Premium form molded bag included
- Silver base
- Graphic tensioner
- Quick slide graphic to leader attachment
- Snap on and off end caps
- Lifetime warranty against manufacturer defects

## dimensions:

### Hardware

#### Assembled unit:

34.25"(w) x 87.2"(h) max x 10.63"(d) approx.  
870mm(w) x 2215mm(h) x 270mm(d) approx.

#### Base dimensions:

34.25"(w) x 3.5"(h) x 10.63"(d) approx.  
870mm(w) x 85mm(h) x 270mm(d) approx.

#### Weight:

12.7 lbs/ 5.78 kg approx.  
(including carry bag)  
(Installed graphic add weight)

### Shipping

**Shipping dimensions** - ships in one box  
13"(w) x 36"(h) x 5"(d)  
320mm(w) x 905mm(h) x 110mm(d)

#### Approximate shipping weight:

21 lbs / 9.8 kg shipping weight with graphic approx.

13 lbs / 5.78 kg shipping weight without graphic approx.

### Graphic

#### Visible dimensions:

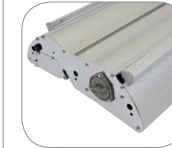
83.35"max(h) x 31.50"(w)  
2120mm(h) x 800mm(w)

29.5"min(h) x 31.50"(w)  
749mm(h) x 800mm(w)

Grippa top rail attachment recommended for semi-permanent or long term use. Adhesive top rail attachment recommended for short term use.

**WARNING:** Always attach graphic to base and top rail before removing the locking pin. After fitting, the graphic should be left for 24 hours before use to ensure the adhesive bonds sufficiently. Opening the base will invalidate the product warranty.

Graphic tension may be re-applied or added by removing the end cap, then turn the ratchet tensioner clockwise.



## additional information:

### Graphic materials:

14oz. anti-curl vinyl, 8oz. oxford,  
11 mil melinex

Stand-off rectangle counter top is available in black thermoform only.

Stand-off literature rack is available (L112-2 only)

LV4 banner lighting option available



**nimlok**

**banner stands**