

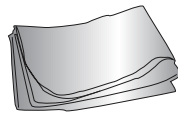
# Ultrafit Chair Cover

## Product Parts

- 1 - Chair
- 2 - Graphic



2



## Hardware Assembly

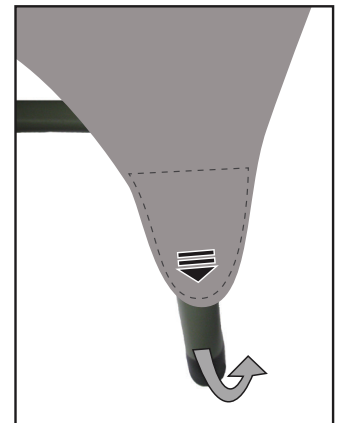
### Step 1

Open up the Chair (1). Locate the two button holes on the back of the Graphic. With button holes facing the back of the chair, slip the graphic over the top of the chair and slide the graphic down and around the chair as shown.



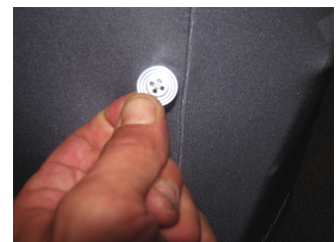
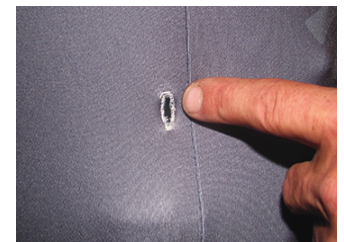
### Step 2

Slide the four feet sleeves of the graphic under the four feet of the chair as shown.



### Step 3

Push the two buttons on the inside of the graphic through the two button holes on the back of the graphic as shown.



## Storage

Store in a cool dry location.

## Care

Machine wash cold, gentle cycle. Air Dry Only

Warranty Information: All products are designed to provide the user with a cost-effective and durable product. Standard warranty is a 'one year parts and labor' warranty which warrants product against defects in material and workmanship. It does not cover damage due to accidents, abuse, or normal wear and tear. Products found to be defective will be replaced or repaired at factory's discretion.