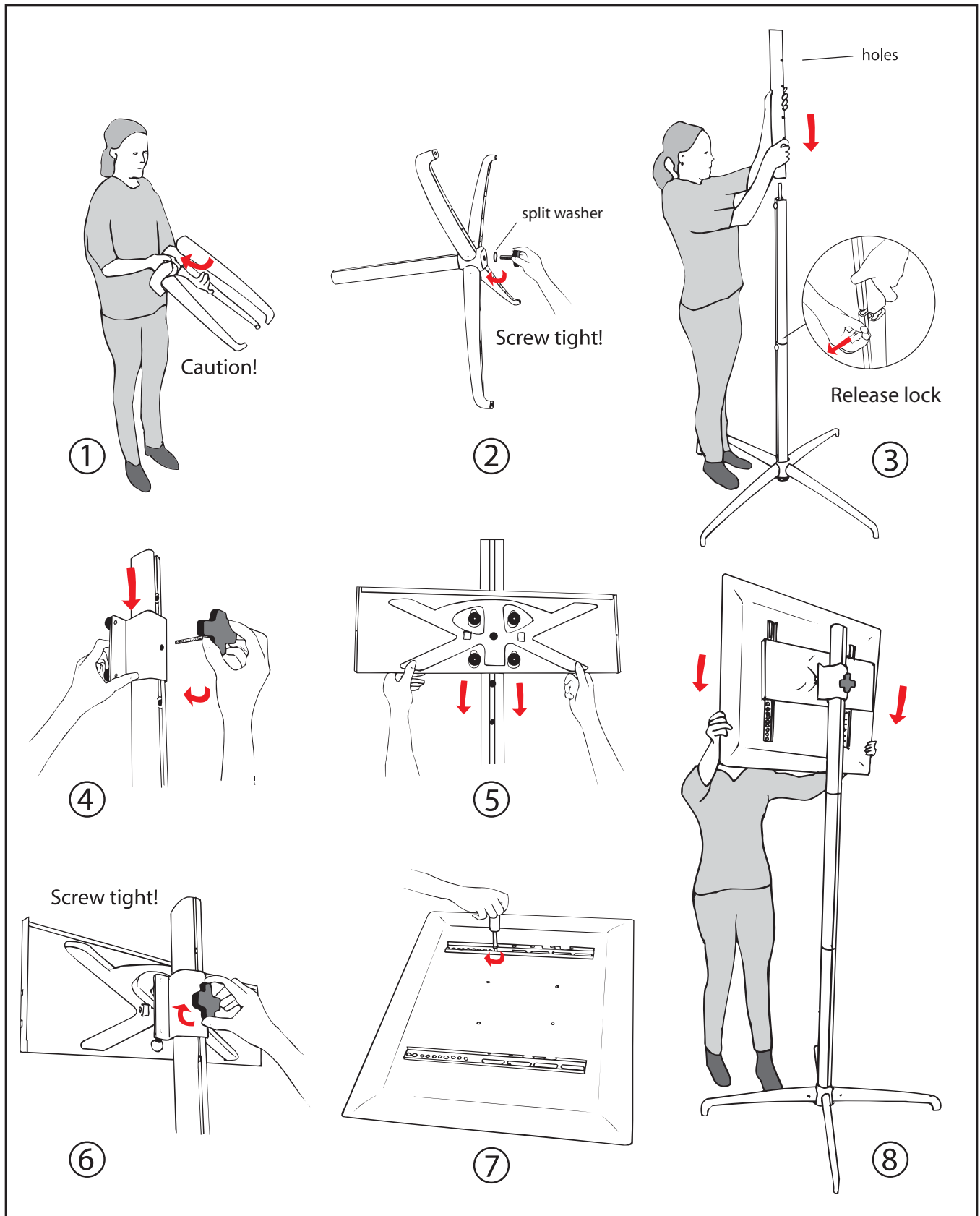


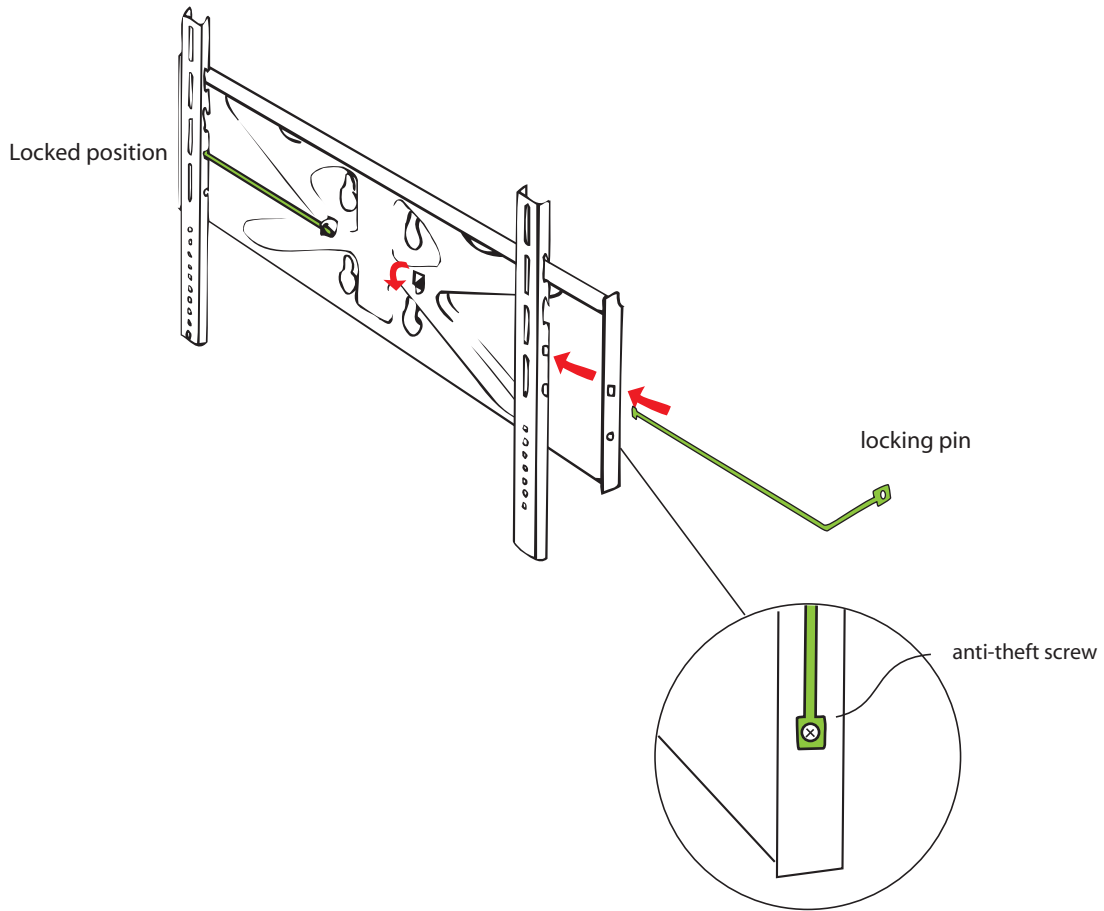
Expand MonitorStand XL Set-up Instruction

Monitor max weight/size: 92.6 lbs. (42 kg.) / Approx 60"



Expand MonitorStand XL Set-up Instruction

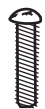
How to secure the monitor



M8/20 M6 /20 M6/12 M5/20 M5/12 M4/20 M4/12



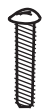
6x



4x



4x



4x



4x



4x



4x



6x



4x



4x



4x



4x

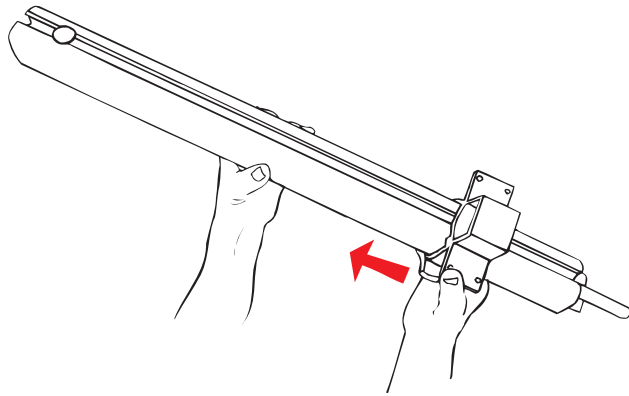


4x

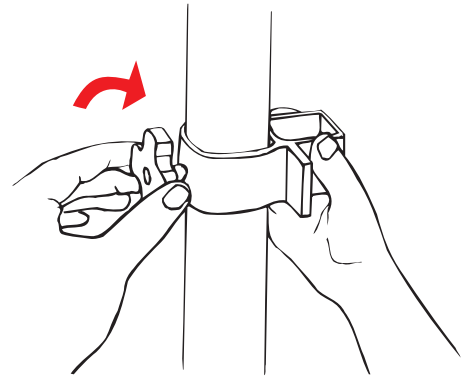


4x

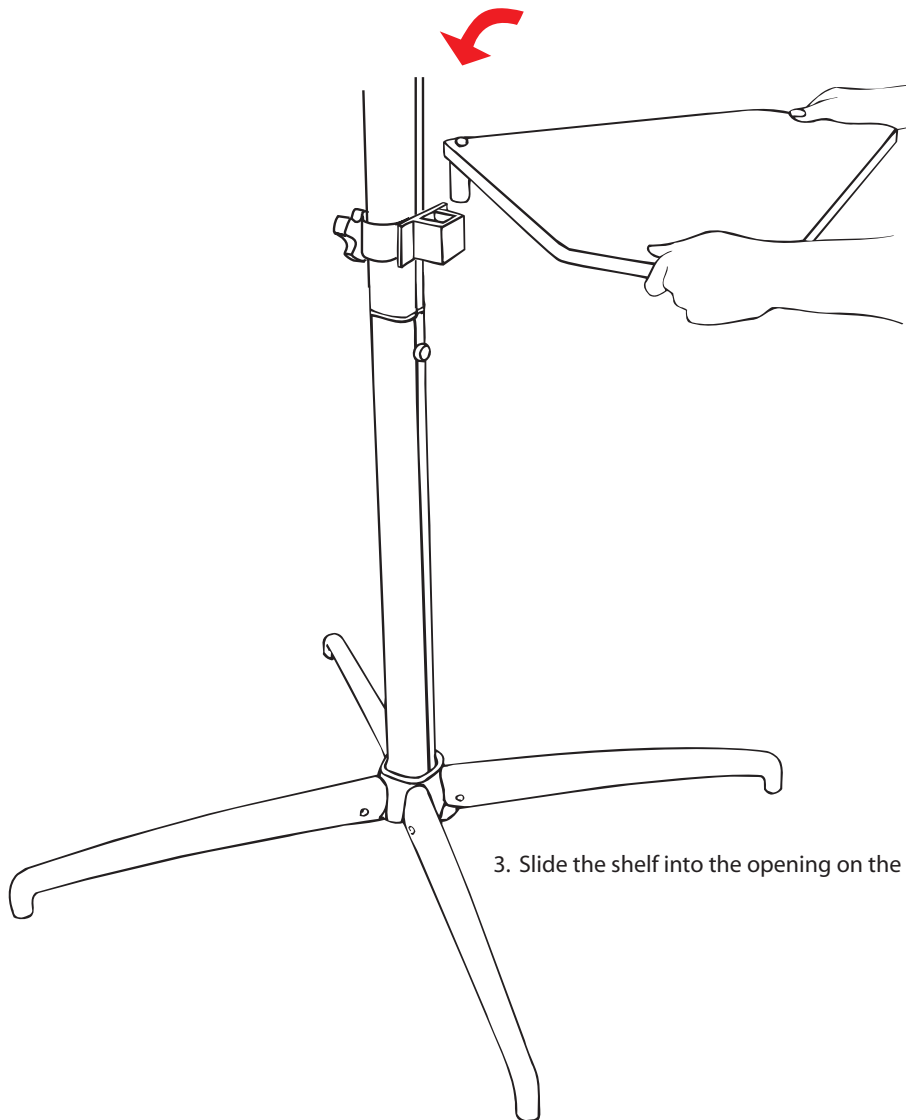
Expand MonitorStand XL shelf



1. Slide the shelf bracket up from the bottom of the pole.



2. Tighten the bracket onto the pole at the desired height.



3. Slide the shelf into the opening on the bracket.