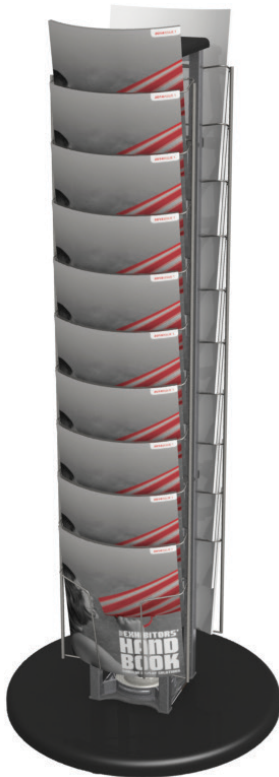


Orbital Truss Kiosk 03

Orbital Express™ Truss Kiosks are the perfect way to display media and/or literature at any trade show, event, retail or corporate space. Kiosks complement the Orbital Truss Express line of 10', 20' and 20' x 20' displays. Monitors not included. Kiosk table tops and bases available in choice of four thermoform finishes.



features and benefits:

- Kit Includes:
 - 1 x 46" Straight truss lengths
 - 1 x Finished base
 - 1 x Truss end cap
 - 2 x Literature rack attachments
 - 1 x OCH2 case
- Holds up to 20 pieces of literature
- Base available in four thermoform finishes, shown below
- Five year hardware warranty against manufacturer defects

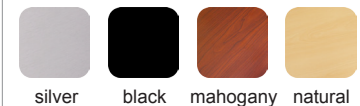
dimensions:

Hardware	Shipping
Assembled unit: 20"w x 48"h x 20"d 508mm(w) x 1219.2mm(h) x 508mm(d)	Shipping dimensions: One OCH2: 50"l x 30"w x 15"h
Weight: 29 lbs / 13.15 kgs	Approximate shipping weight (with case): 61 lbs / 27.7 kgs

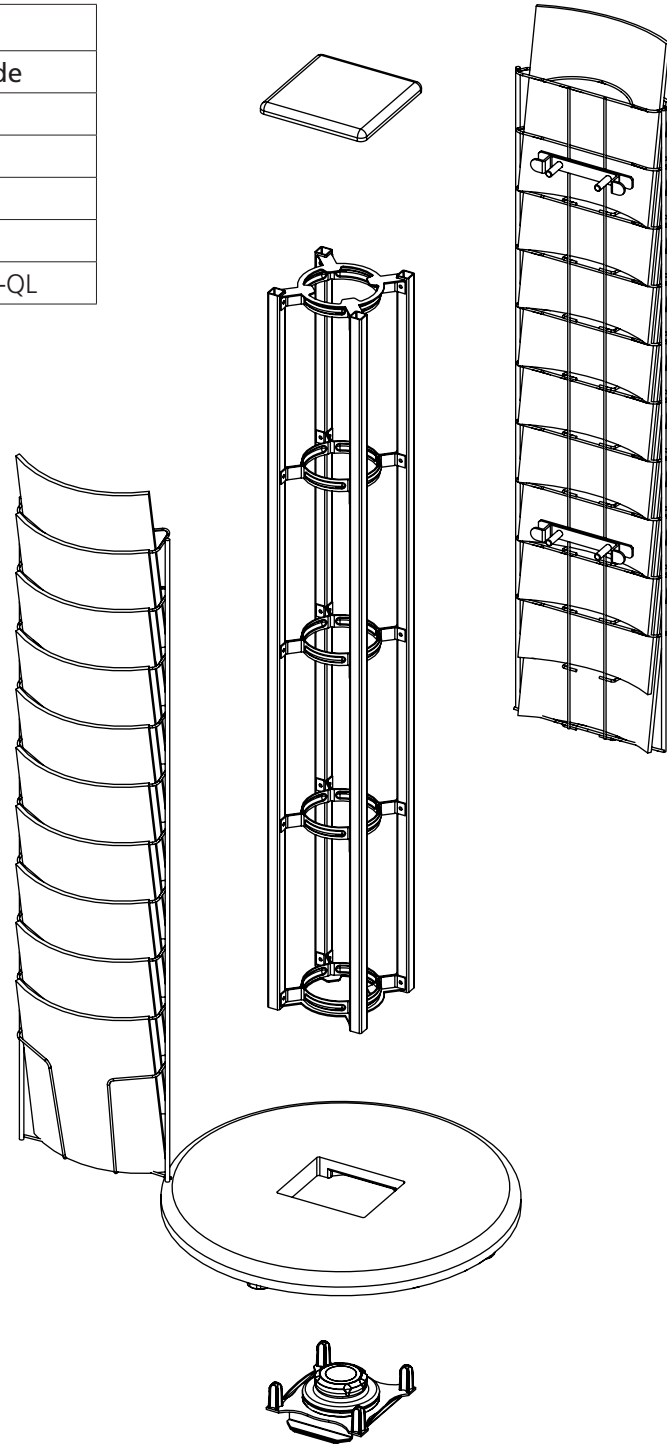
additional information:

Keep all packaging materials

Base colors:



Parts Included		
Part Label	Qty	Part Code
ORBITAL 46" STRAIGHT TRUSS, QL VERSION	x1	OR-46-2
ORBITAL BASE 05	x1	OR-B5
ORBITAL 10 POCKET LITRACK	x2	OR-STG
ORBITAL TRUSS END CAP, 15MM THICK	x1	OR-TEC
ONE PIECE UNIVERSAL CONNECTOR FOR ORBITAL EXPRESS QUICK LOCK	x1	OR-UNC-QL



STEP 1: ASSEMBLE FRAME

