



www.american-image.com

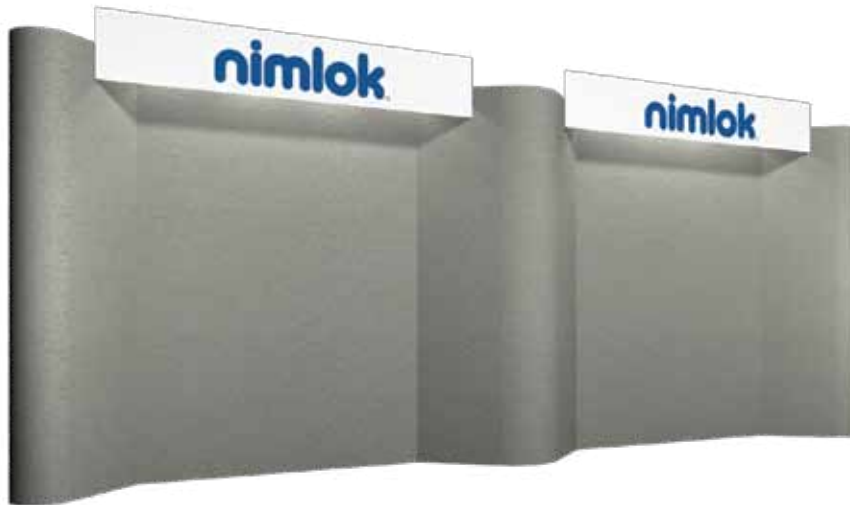
EASY ST display details & setup instructions

nimlok®
authorized distributor

easy st K05

K05

Easy ST is a collection of lightweight, portable fabric panel 10' and 20' exhibit booths. Easy ST systems combine various design options and make assembly and packing quick and easy.



features and benefits:

- Velcro and push-pin-friendly fabric panels in your choice of 18 colors
- Counter tops available in four finishes
- Each panel is numbered for easy assembly
- Comes with 20 fabric panels, 6 curved fabric panels, 2 graphic header, 8-75 watt rear lights for graphic headers, 4 MCW42 cases, and 2 header bags
- One year limited warranty against all manufacturers defects

dimensions:

Hardware

Assembled unit: 228" w x 99" h x 19" d
5791mm(w) x 2515mm(h) x 483mm(d)

Approximate weight: 260 lbs/ 118 kg

Shipping

Shipping dimensions: with 4 MCW42 cases
each case - 50" (l) x 29" (w) x 12" (h)
1270mm(l) x 737mm(w) x 305mm(h)

Approximate shipping weight: (entire kit)
348 lbs/ 158 kg

Graphic

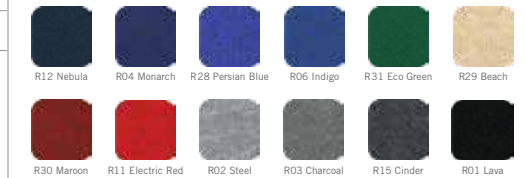
Graphic header: 86" w x 14.75" h
2184mm(w) x 375mm(h)

Fabric color options

Regal - smooth textured fabric



Premier - ribbed textured fabric



additional information:

Graphic header materials:

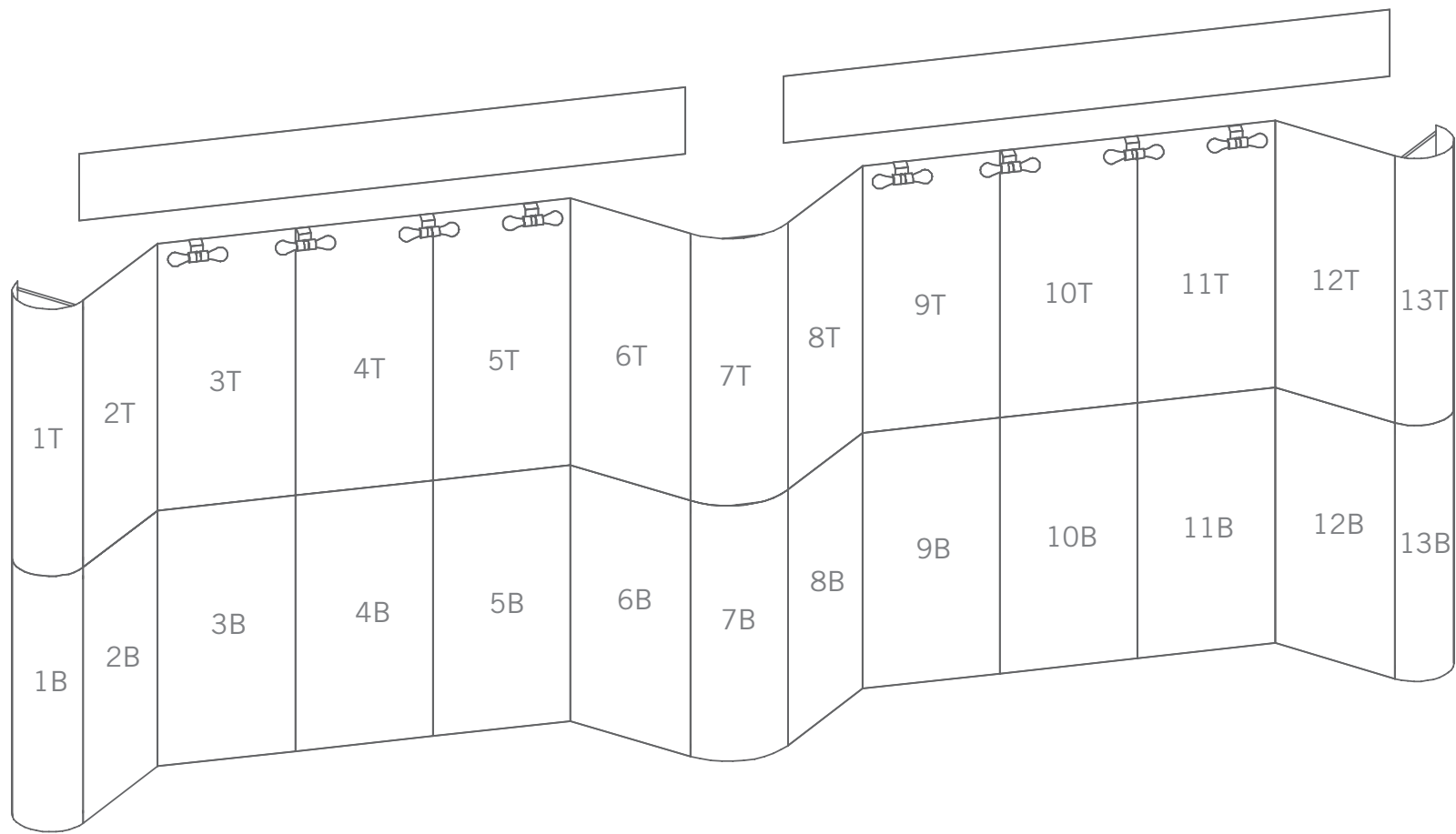
UV printed vinyl on 3mm milk plex

Lights included:

8 YLD 75 watt double bulb fixtures

nimlok

easy st



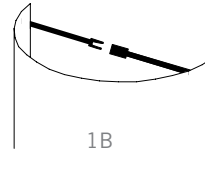
Set-up



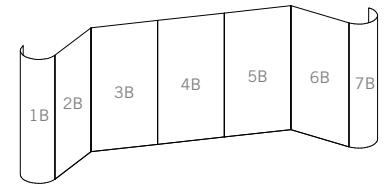
Unpack all panels from the cases. Do not discard the packing material. **1**



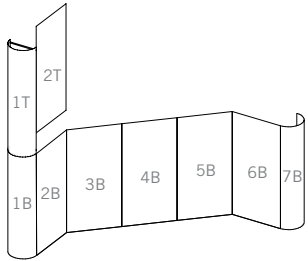
All panels are numbered left to right on the back. Assembly starts from bottom left panel marked 1B (1 Bottom) and continues with panel marked 2B (2 Bottom). **2**



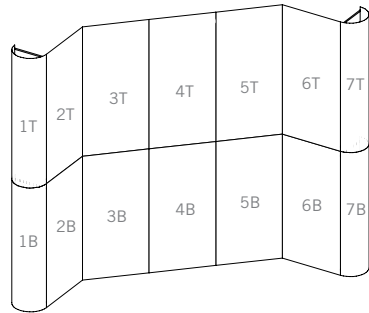
To form a curved panel gently curl the panel and connect the braces. **3**



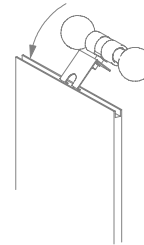
Use page 2 as an angle guide as you continue building the bottom layer. **4**



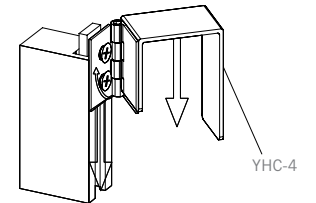
Add the first panel marked 1T (1 Top) into position. Add the second panel, 2T (2 Top) by sliding the aluminum link into the routed portion of panel 1T. Slide panel into position. **5**



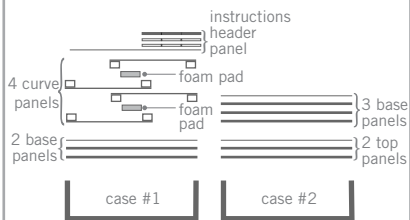
Add the remaining top panels until assembly is complete. **6**



Position light fixtures where indicated on the panel by placing the lights into the channel and lower down. **7**



To assemble the header, attach the separate pieces together with the sliding connectors top and bottom and tighten the thumbscrews. The hinged connectors on the sides of the header hook over the panels as shown on page 2. **8**



Using the example above, repack your exhibit. NOTES: Always use cardboard sheets between panels. Always pack panels fabric to fabric or back to back. **9**